



MOTOTRBO™

Enhanced Data Applications



MOTOTRBO™ Location Services

Enables **dispatcher-based location tracking** of people and vehicles with no monthly fees or external GPS devices

Uses a **GPS modem and receiver** integrated within portable and mobile radios

MOTOTRBO Location Services software enables a computer to **display maps and the location of each GPS-enabled radio**

Tracking users via the mapping client allows you to **more efficiently manage your fleet** or mobile workforce as well as optimize schedules, route planning, and dispatching

GPS updates can be sent at preconfigured intervals, on demand by the dispatcher, or upon press of the emergency button

Enables **definition of multiple geofences** with real-time, on-screen indications when a radio enters or exits them

Supports **historic data playback**—the system logs the GPS location data for the radios being tracked and can be played back at any time

Location Services integrates with the MOTOTRBO Text Messaging Services application and allows features such as **sending text directions to radios**

MOTOTRBO™ Text Messaging Services

Provides **fast and flexible text-format communication** between radios and dispatch systems, between radios and email-addressable devices, and to remote PC clients attached to radios

Create, reply to, forward, edit and save messages

Send and receive messages to selected group of radios, an individual radio, a fixed client or a mobile client

Enable an **alternate means of communication**—a user can read a text message in a loud environment where

voice is difficult to hear or when sensitive information is being communicated

Provision for messaging with **SMTP address** (external emails)

Web-based administration utility for **convenient address book management**

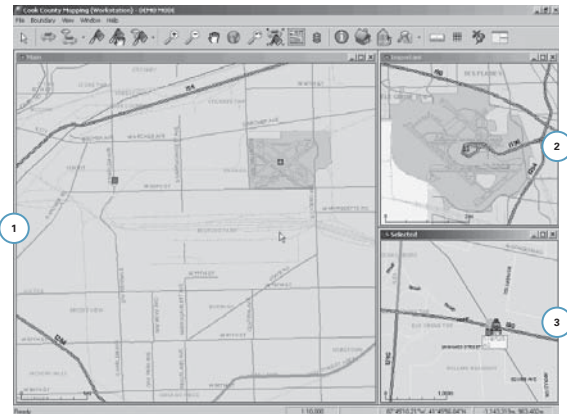
Ability to **connect a laptop** to any field radio creating a mobile dispatch client

Reduce operating costs by consolidating communication devices—no need for two-way pagers

Accelerate performance.

The next-generation professional two-way radio communications solution is here, with more performance, productivity and value—thanks to digital technology that delivers increased capacity and spectrum efficiency, integrated data communications and enhanced voice communications.

MOTOTRBO offers you a private, standards-based, cost-effective solution that can be tailored to meet your unique coverage and feature needs. This versatile portfolio provides a complete system of portable radios, mobile radios, repeaters, accessories and data applications.



MOTOTRBO™ Location Services

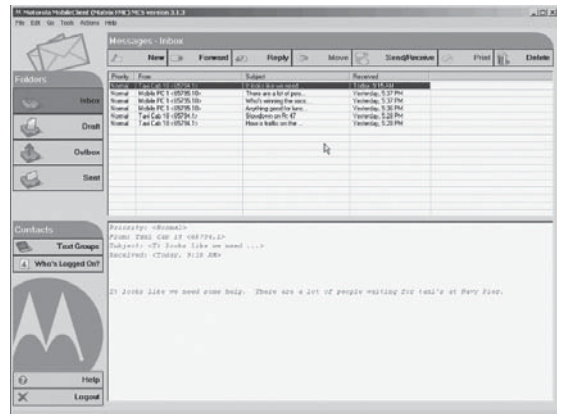
With Location Services, dispatchers can take advantage of flexible configuration and views. Emergency calls automatically display in the “Important” window, and remain on the screen until acknowledged by the dispatcher.

1. Main window
2. Important window
3. Selected window

Installs easily into a PC operating Windows XP or Windows 2000.

Standard package includes:

- MotoLocator (server software)
- Mapping client software
- Documentation and utilities CD
- High-level map of the United States or Canada (customer then chooses up to 9 counties in the US or 50 Postal Codes in Canada of detailed custom map data)
- One radio license (tracks a single user—additional licenses are required for each radio tracked)
- One mapping client license (enables mapping client software—licenses are required for each additional client)
- One unique serial number



MOTOTRBO™ Text Messaging Services

MOTOTRBO Text Messaging Services provides an easy to use, intuitive interface.

A simple configuration enables PC-to-radio text messaging.



Installs easily into a PC operating Windows XP or Windows 2000.

Standard package includes:

- Text Messaging server software
- Text Messaging client software*
- Documentation and utilities CD
- One radio license (allows text messaging to a single user—additional licenses are required for each radio that will send/receive text messages from the PC)
- One unique serial number

*Mobile client(s) software is sold separately



MOTOROLA

MOTOROLA and the Stylized M Logo are registered in the U.S. Patent and Trademark Office. All other product or service names are the property of their registered owners. © Motorola, Inc. 2007
MD-EU/SP/DATAAPPS